



Marlin's M Mount Multi-Fit

Installation, Care and Use of iPhone - iPod Touch - SmartPhone Holder



CAUTION: DO NOT under any circumstances operate a phone or any other portable device during the operation of your vehicle.



2 1/2" Optional Extension go's here.

Begin by making sure your electronic device fits properly in the mount, the device should be snug and secure and allow access to any necessary plugs and buttons. Start by placing your device next to the mount and determining if any spacers are required to fit the device properly. Removing the two bolts at the bottom of the unit and re-assembling the unit with any spacers if needed as shown at right. Place your device

at an angle in the bottom of the unit and pull the spring loaded jaw up, move your device inside the mount and release the spring loaded jaw to secure device in the mount. Make sure the device rests in the center of the V grooves at top and bottom and is secure.

Adjust the side rails to secure the device horizontally by loosening the bottom bolts and moving the side rails in or out as close to the base as possible so you do not deform them, you may wish to relieve tension on the device by pulling up on the spring loaded jaw while adjusting the side rails. Remove your device from the mount and tighten the two bolts at bottom to fix the side rails and bottom plate in place.

Once you have ensured the device fits properly, find a convenient, visible position for the mount that will not interfere with the operation of the vehicle.

If you are mounting using the adjustable handlebar mount and need to move the unit away from the bars use the included 2 1/2" extension rod as shown below.

Once the device fits into the holder snugly and you have found the proper location you can start to install hardware to the vehicle. The M Mount may be installed on a Marlin's TOCS for flat panel install (Left Text), a handlebar clamp adjustable style HBC (Center Text) shown below or the Bullet Billet BBSC2 or Talon style mount - Marlin's Clock or Thermometer Brake/Clutch style BCM mount is not suitable for the M Mount or the Perch style mount (Right Text)

If you purchased the M Mount with an included clamp follow the directions below, if you plan on mounting the M Mount to another style Marlin's mount follow the installation instructions that came with the mount to attach it to the vehicle.

During installation make sure that the unit or any parts do not fall and become damaged or damage the vehicle.

Install M Mount head unit onto round receiver and secure using one supplied hex set screw

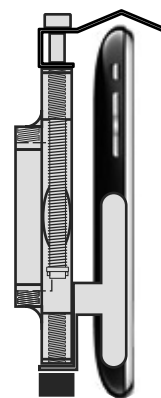
(there are two holes provided in the back of the mount for convenience but it is only necessary to secure one)

Place your device at an angle in the bottom of the unit and pull the spring loaded jaw up, move your device inside the mount and release the spring loaded jaw to secure device in the mount.

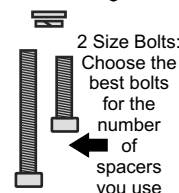
Make sure the device rests in the center of the V grooves at top and bottom and is secure.



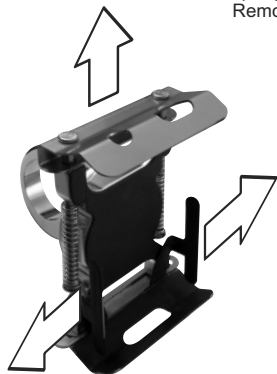
M Mount can rotate 360 degrees to be used in horizontal or vertical format



4 Spacers: Use All Some or None



The M Mount will accommodate most skins and cases, be sure the device is secure. You don't want to just be holding the case or skin and not have the device secure, so double check.....



Flat Panel Mounting Bracket

Carefully remove and confirm content of package containing TOCS flat panel mounting items:

Items listed above plus (1) TOCS / chrome cup with center mounting hole, (1) 1/4" X 20 screw

Secure chrome cup to panel or other stable area using supplied screw or suitable hardware.

Install M Mount head unit to secured cup using single hex set screw making sure the set screw is secure.



The Pro-Dash App provides a convenient, easy to see speedo, clock, temp, altitude, compass and more on your iPhone 3Gs or higher and Android Smartphones



Note:PRO-DASH requires GPS signal and iPhone 3Gs or newer.

HBC Handlebar Mounting Bracket

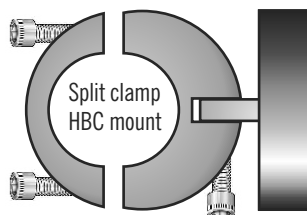
Carefully remove and confirm content of package containing one of three different sized handlebar mounts (1" & 7/8" - 1 1/4" - 1 1/2"):

Items listed above plus (1) adjustable HBC mounting clamp with 3 installed screws, (1) 2 1/2" extension bar with screw, washer and nut.

The 2 1/2" extension will fit between the head and the clamp of the HBC mount that attaches to the handlebar and will extend the M Mount allowing you to get more adjustment from the unit.

Remove the two rear screws from the HBC style handlebar clamp, separating the two clamp halves. Place the handlebar clamp halves in the position of your choice on the bars (keep away from curves or areas the bar may not be a consistent thickness), re-insert the supplied screws and tighten gently and evenly (for the mount to tighten properly there should be a small gap between the two halves, no bar is the same so the gap will vary - DO NOT over-tighten. Loosen the hex screw on the round head portion (pivot adjustment) of the clamp, move it into the desired position and tighten hex screw to lock head in place (install 2 1/2" extension if desired).

Install M Mount head unit to secured cup using single hex set screw making sure the set screw is secure.



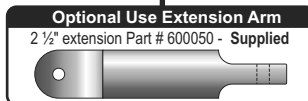
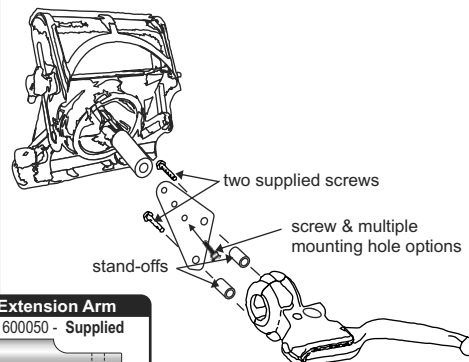
Perch Mounting Bracket

Carefully remove and confirm content of package containing Perch clamp mounting items:

Items listed above plus (1) mounting plate with holes, (2) extended screws for mounting (will be SAE or Metric available separately), 1 1/4" extension rod with mounting screw, (2) stand-off spacers.

- 1.Remove two control clamp screws from bike. (We suggest from the clutch side but the brake side will also work)
- 2.Place stand-offs and bracket up to control clamp and install two supplied extended screws to secure bracket.
- 3.Use thumb screw to secure Mount to bracket in one of three mounting holes.

Install M Mount head unit to secured cup using single hex set screw making sure the set screw is secure.



ALL RETURNS MUST BE PACKED TO ELIMINATE DAMAGE - DAMAGED RETURNS WILL NOT BE ACCEPTED

Technical support: 248-683-1536 www.marlinsclocks.com



Marlin's Gator Mount

Installation, Care and Use of Portable Electronic Device Holder

CAUTION: DO NOT under any circumstances operate a phone or any other portable device during the operation of your vehicle.

Marlin's Gator Mount allows you to quickly, easily and conveniently locate your GPS, smart phone or other devices on your motorcycle, ATV or other personal pleasure vehicles handlebars and to swivel and rotate it to be in easy view and reach. Your new Gator Mount is made of the finest materials for easy cleaning and long life. You can care for your Gator Mount using cleaners and polishes suitable for billet aluminum and stainless steel.

Carefully remove and confirm content of package:

One (1) Gator Mount (fully assembled), your package may also include one of three different sized handlebar mounts (1" & 7/8" - 1 1/4" - 1 1/2") if purchased as a set.

STEP 1. Begin by making sure your device fits properly in the mount, the device should be snug and secure and allow access to any necessary plugs and buttons. You may modify the frosted plastic wing inserts to give you access to any plugs or buttons that may be underneath by trimming or creating a hole in them with a sharp blade, drill bit or punch.

STEP 2. Once you have ensured the phone fits properly find a convenient, visible position for the mount that will not interfere with the operation of the vehicle. If you need to move the clamping unit away from the mounting area we manufacture an extension as shown below.

You can order this 2 1/2" extension if needed. The 2 1/2" extension will fit between the head and the clamp of the HBC mount that attaches to the handlebar and will extend the Gator Mount allowing you to get more adjustment from the unit.

The combination of the HBC mount & Gator Mount head will allow you to adjust your device in all directions, twisting and rotating it so that it will always face you. Once you have your device in the best position and have made all your adjustments you can lock down all the screws to keep it firmly in place.

STEP3. Now that you have made sure the device fits into the holder snugly and found the proper location you can start to install hardware to the vehicle. The Gator Mount unit may be installed on a Marlin's Handlebar style clamp (as shown)(HBC) or the Bullet Billet (BBCS2) or Talon style mount.

The Gator Mount is not suitable to be mounted on the Marlin's Clock or Thermometer Brake/Clutch style (BC) mount. If you purchased the unit with an included HBC style clamp follow the directions below, if you plan on mounting the Gator Mount head to another style Marlin's mount follow the installation instructions that came with the mount to attach it to the vehicle.

ALL RETURNS MUST BE PACKED TO ELIMINATE DAMAGE DAMAGED RETURNS WILL NOT BE ACCEPTED



The Pro-Dash App provides a convenient, easy to see speedo, clock, temp, altitude, compass and more on your iPhone 3Gs or higher and Android Smartphones

Note: PRO-DASH requires GPS signal and iPhone 3Gs or newer.

Gator Mount can be used in horizontal or vertical orientation



STEP4. Make sure that the unit or any parts do not fall and become damaged during installation.

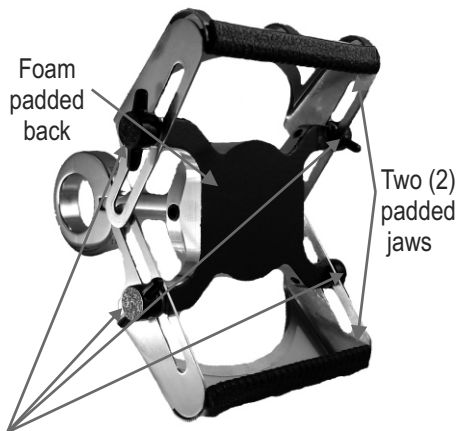
Remove the two rear screws from the HBC style handlebar clamp, separating the two clamp halves. Place the handlebar clamp halves in the position of your choice on the bars (keep away from curves or areas the bar may not be a consistent thickness), re-insert the supplied screws and tighten gently and evenly (for the mount to tighten properly there should be a small gap between the two halves, no bar is the same so the gap will vary - DO NOT over-tighten).

Loosen the hex screw on the round head portion (pivot adjustment) of the clamp, move it into the desired position and tighten hex screw to lock head in place (install extension if desired).

STEP5. Install Gator Mount head unit onto round portion of clamp and secure using one supplied hex set screw (there are two holes provided for convenience but it is only necessary to secure one).

STEP6. Open wings of mount and insert device making sure the padded jaws overlap and grip the device properly. Using the leverage of the wings pull the device against the aluminum backer and tighten the winged thumb screws to secure device.

IMPORTANT FINAL STEP. Release pressure of one wing at a time and compress the wing/jaw against the device to hold it firmly to the backer and tighten securely, then repeat the procedure with the opposite wing to ensure the device is locked in firmly. Double check all other screws and connections to ensure they are secure and will not allow movement of the device or any component.



Four (4) winged thumb screws to secure device

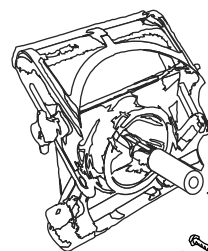


The Gator Mount will accommodate most skins and cases but you must be sure the device is secure. You don't want to just be holding the case or skin and not have the device secure, so double check it...

Gator Mount shown in closed stored position



Optional Perch Mounting Bracket



1. Remove two control clamp screws from bike. (We suggest from the clutch side but the brake side will also work)
2. Place stand-offs and bracket up to clamp and install two supplied screws to secure bracket.
3. Use thumb screw to secure Mount to bracket in one of three mounting holes.

